

## ROBOTC Building License - Installation

# Installing a Building License

*This document is a guide to installing your new Building License version of ROBOTC. Follow this guide to install your license file to start using ROBOTC.*

You will need:

- Administrator Level Access to the computer that will be using ROBOTC. This computer can be a "master image" computer to be installed on multiple workstations.
- ROBOTC Installer and any robot platform (LEGO, VEX) specific USB drivers.
- ROBOTC Building License File(s), contained in the .zip files you received in your e-mail.

1. Download the .ZIP files from your e-mail account to the computer that will be using ROBOTC.

*Sample email:*

Thank you for purchasing a ROBOTC Building License!  
In order to use your new Building License, you will have to download a special version of ROBOTC. Please use the following download links:  
ROBOTC for MINDSTORMS:

[http://www.robotc.net/files/ROBOTCforMINDSTORMS\\_203\\_Building.exe](http://www.robotc.net/files/ROBOTCforMINDSTORMS_203_Building.exe)

Depending on your platform type, you may also need to install drivers for each platform. Please find the latest drivers from the ROBOTC.net website for each platform.

ROBOTC for MINDSTORMS:

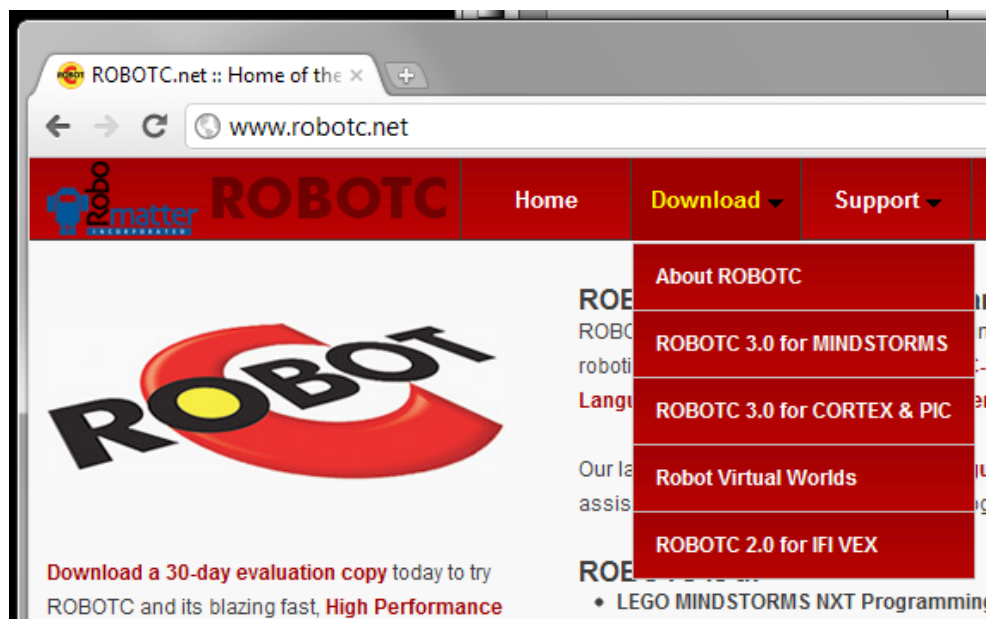
<http://www.robotc.net/download/nxt/>

Also attached to this e-mail are a couple of documents and files

- **building\_license\_install\_guide.pdf:** A PDF on how to install your new building license to your computer.
- **.ZIP file(s):** This .zip file contains your ROBOTC license. If there are multiple .zip files attached, there is one for each building and platform version of ROBOTC purchased. The file is named with the following convention: SchoolName\_PlatformType\_LicenseFile.zip

**Please read through the building license install guide before installing any software.**

2. Download ROBOTC for your specific platform from the ROBOTC.net homepage. If you have more than one building license, you only need to download ROBOTC once.



## ROBOTC Building License - Installation

### Installing a Building License *(cont.)*

3. Be sure to download any specific drivers from the same page you download ROBOTC.

#### Additional Downloads:

##### Download the VEX CORTEX Device Driver:

- VEX Programming Driver (32-Bit)
- VEX Programming Driver (64-Bit)
- VEX Programming Driver - FAQ & Instructions

##### Download Prolific Driver to use the USB-to-Serial adapter:

- Prolific USB to Serial Driver (Windows XP)
- Prolific USB to Serial Driver (Windows 7, VISTA)

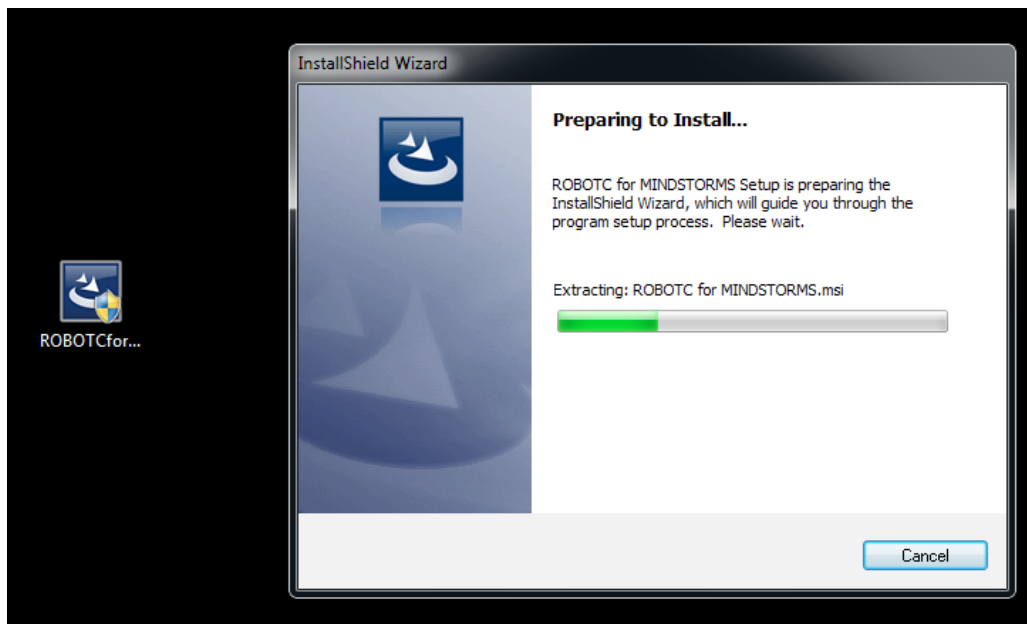
#### Additional Downloads:

##### Choose ONE of the following required drivers: Do I have a 32 bit or 64 bit operating systems?

- **NXT - 32 bit operating system - UPDATED!**
- **NXT - 64 bit operating system - UPDATED!**
- **RCX - 32 bit operating system** (older ROBOTC versions)

In Windows® XP, Vista or 7, right click on My Computer and choose Properties / General Tab. If you have a 64-bit operating system, it will be noted here. If not specified, you have a 32-bit operating system.

4. Install ROBOTC to the computer (this can be a computer that is being prepared to be imaged).



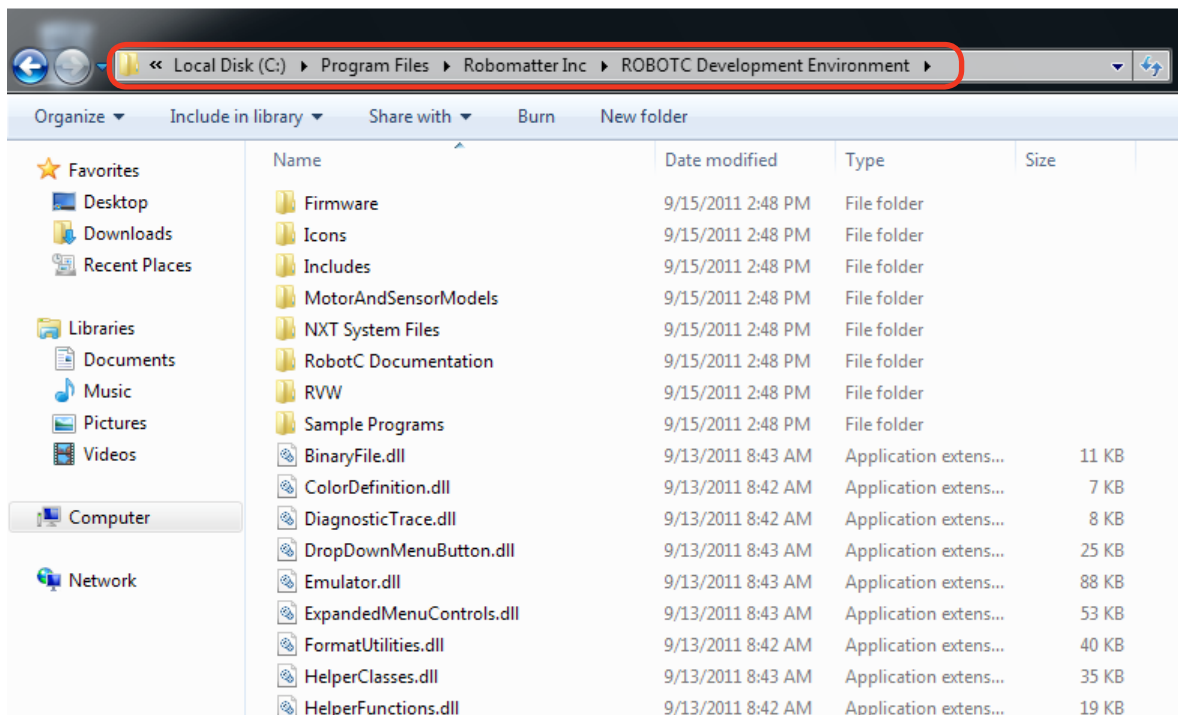
## ROBOTC Building License - Installation

### Installing a Building License *(cont.)*

- Once ROBOTC has been installed, locate the .zip file you downloaded from your e-mail. This .zip file contains your license for ROBOTC. Open this .zip file and leave this window open.



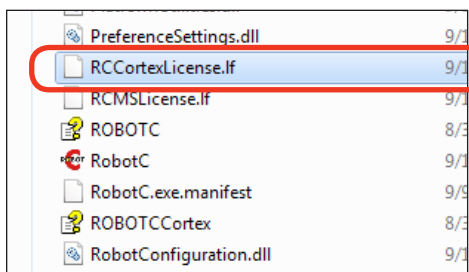
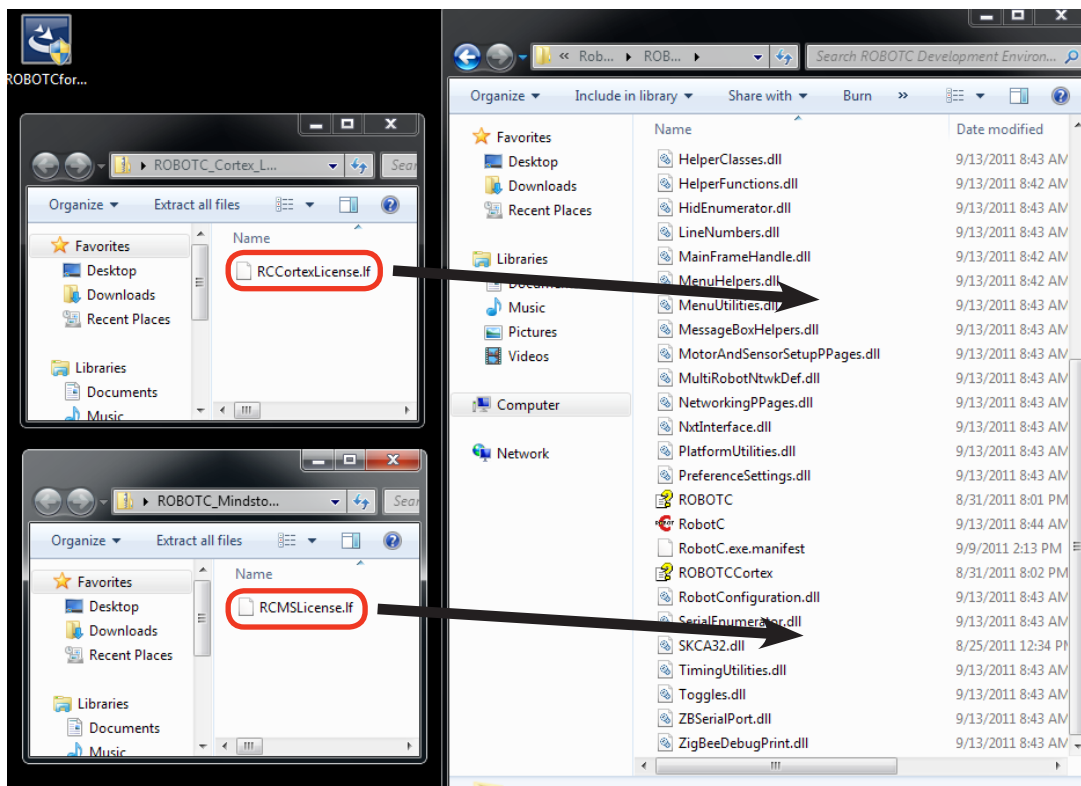
- Open a Windows Explorer window and navigate to where you installed ROBOTC on your computer. This is typically:  
 "C:\Program Files\Robomatter Inc\ROBOTC Development Environment\" or  
 "C:\Program Files (x86)\Robomatter Inc\ROBOTC Development Environment\"



## ROBOTC Building License - Installation

### Installing a Building License (cont.)

7. With both the .zip file open and the ROBOTC installation folder open, copy the license file over from the .zip file to the ROBOTC folder.



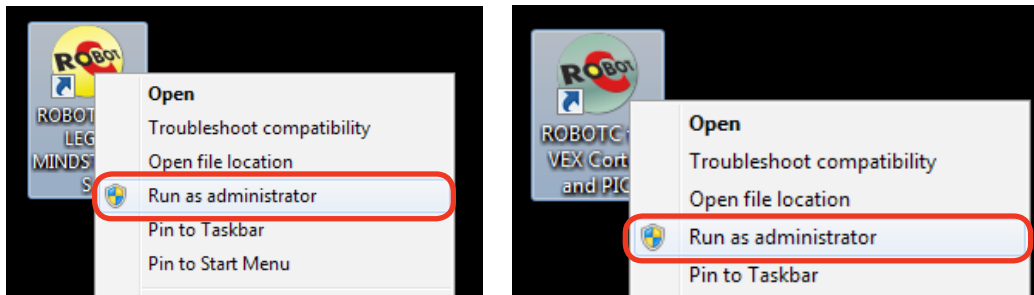
8. Make sure you install the correct license file for the correct product.

Do not change these names, or else ROBOTC will not be able to locate the license file.

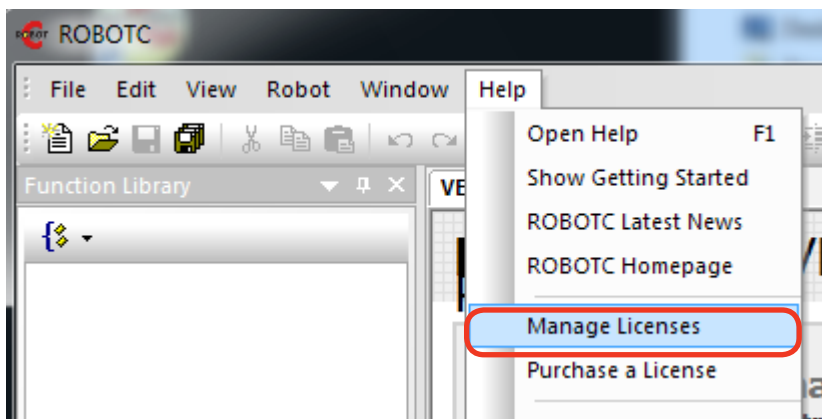
## ROBOTC Building License - Installation

### Installing a Building License *(cont.)*

9. Once the License File has been copied, open ROBOTC for the first time by right clicking on the ROBOTC icon and selecting, "Run as Administrator" -- This is required to initialize the building license. *(ROBOTC only needs to be run as an Administrator once.)*



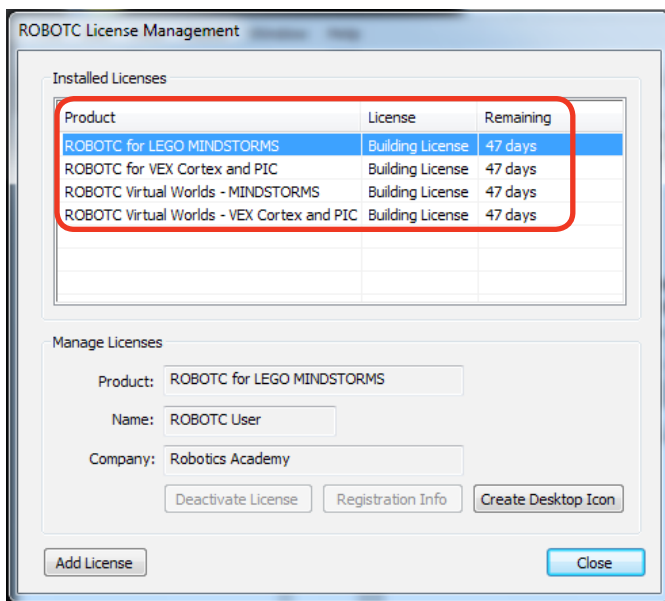
10. Once Inside of ROBOTC, navigate to the "Help - Manage Licenses" menu option.



## ROBOTC Building License - Installation

### Installing a Building License *(cont.)*

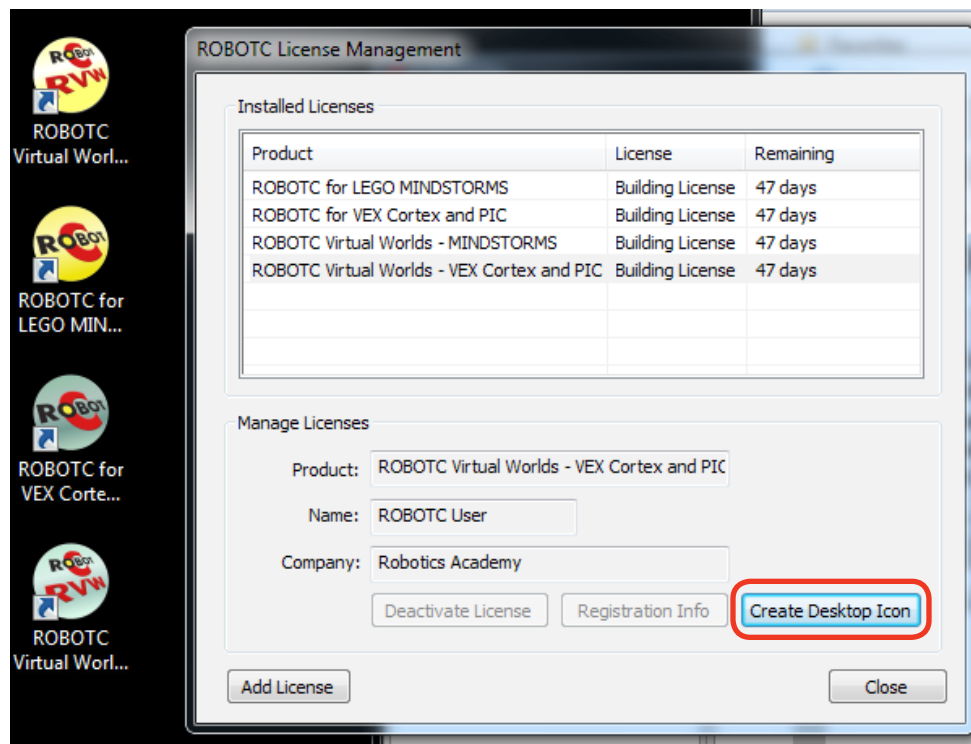
11. From here you can verify that your building license has been installed. You will see your building licenses listed in the license window.



\* Note: All available products are shown here for illustrative purposes.

Only the products which have installed Building Licenses will appear in this list.

12. If you have more than one building license, you can create desktop icons for these additional products.



## ROBOTC Building License - Installation

### Installing a Building License *(cont.)*

13. If imaging this machine to roll out onto multiple computer you do not have to perform any additional steps. ROBOTC does not require activation or registration.

If you are running ROBOTC from a centralized server, you will need to download the "ROBOTC Redistributables" available at ROBOTC.net under the download page for your platform type. The redistributables pack contain all of the Visual Studio 2008 runtimes required to run ROBOTC on a machine that ROBOTC was not directly installed on.



#### **Useful Information - Building License Error Codes**

ROBOTC may present you with an error code if there is an issue when using the Building License system with a license file. Here are some common error codes and troubleshooting ideas.

##### **Error Code #8 - Unable to Process the License File**

This error typically means that ROBOTC is unable to read the license file. The license file may have become corrupted, or ROBOTC does not have access to read and write to the license file. Try re-downloading your license file and checking the permissions on the license file as well.

##### **Error Code #15 - Missing License File**

This error typically means ROBOTC cannot find your license file. This could mean that you have not copied over your license file to the correct directory or the name of the license file has been changed. Make sure the license file resides in the same directory as the ROBOTC application and that it also has the correct name.

##### **Error Code #30 - Current System Clock Older Than Last Run Date:**

This error occurs when the Windows System Clock has been rolled back to an earlier time than that last time that you opened ROBOTC. Verify that your system clock is current and that it has not been set to an earlier date.

If you experience any other error codes, please contact ROBOTC Support.